

Note 1
Drive Side can be on either side (L or R) telephone point & cabinet must be on the Drive Side.

Table A

	Pit / Aperture Size		Platform Size		Landing Clear Opening	
	Width	Length	Width	Length	Width	Height
Standard	1280 mm	1590 mm	1120 mm	1480 mm	1280 mm	2230 mm
Size 'A'	1180 mm	1590 mm	1020 mm	1480 mm	1180 mm	2230 mm
Size 'B'	1380 mm	1590 mm	1220 mm	1480 mm	1380 mm	2230 mm
Size 'C'	1180 mm	980 mm	1020 mm	870 mm	1180 mm	2230 mm
Size 'D'	1280 mm	980 mm	1120 mm	870 mm	1280 mm	2230 mm
Size 'E'	1380 mm	980 mm	1220 mm	870 mm	1380 mm	2230 mm
Size 'F'	1180 mm	1790 mm	1020 mm	1680 mm	1180 mm	2230 mm
Size 'G'	1280 mm	1790 mm	1120 mm	1680 mm	1280 mm	2230 mm
Size 'H'	1380 mm	1790 mm	1220 mm	1680 mm	1380 mm	2230 mm
Size 'J'	1280 mm	1280 mm	1120 mm	1170 mm	1280 mm	2230 mm

Note: Control cabinet size is 154mm x 210mm x 2200mm

IMPORTANT: this drawing must be used in conjunction with Drawing No. AL00 Builders Work & Electrical Requirements

Ability LIFTS LTD <small>Woppers Business Park, Woppers Road, South Yendon, S19 5LQ Tel: 01454 600 983 Email: sales@abilitylifts.co.uk</small>		Opt 100 Platform Lift
Site: TYPICAL ARRANGEMENT		
Project No. : OPT100/OP/L2/TH3000	Drawing No. : AL01	Revision No. :
Scale : NTS @ A2	Date : Mar 2016	Dm : NB
Page 1 of 2		
Refer to Drawing No. AL00 Generic Builders Work & Electrical Requirements - Page 2 of 2		

DO NOT SCALE FROM THIS DRAWING. COPYRIGHT PROTECTED. ALL DIMENSIONS TO BE CHECKED ON SITE.

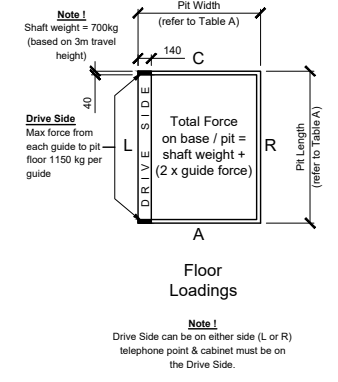
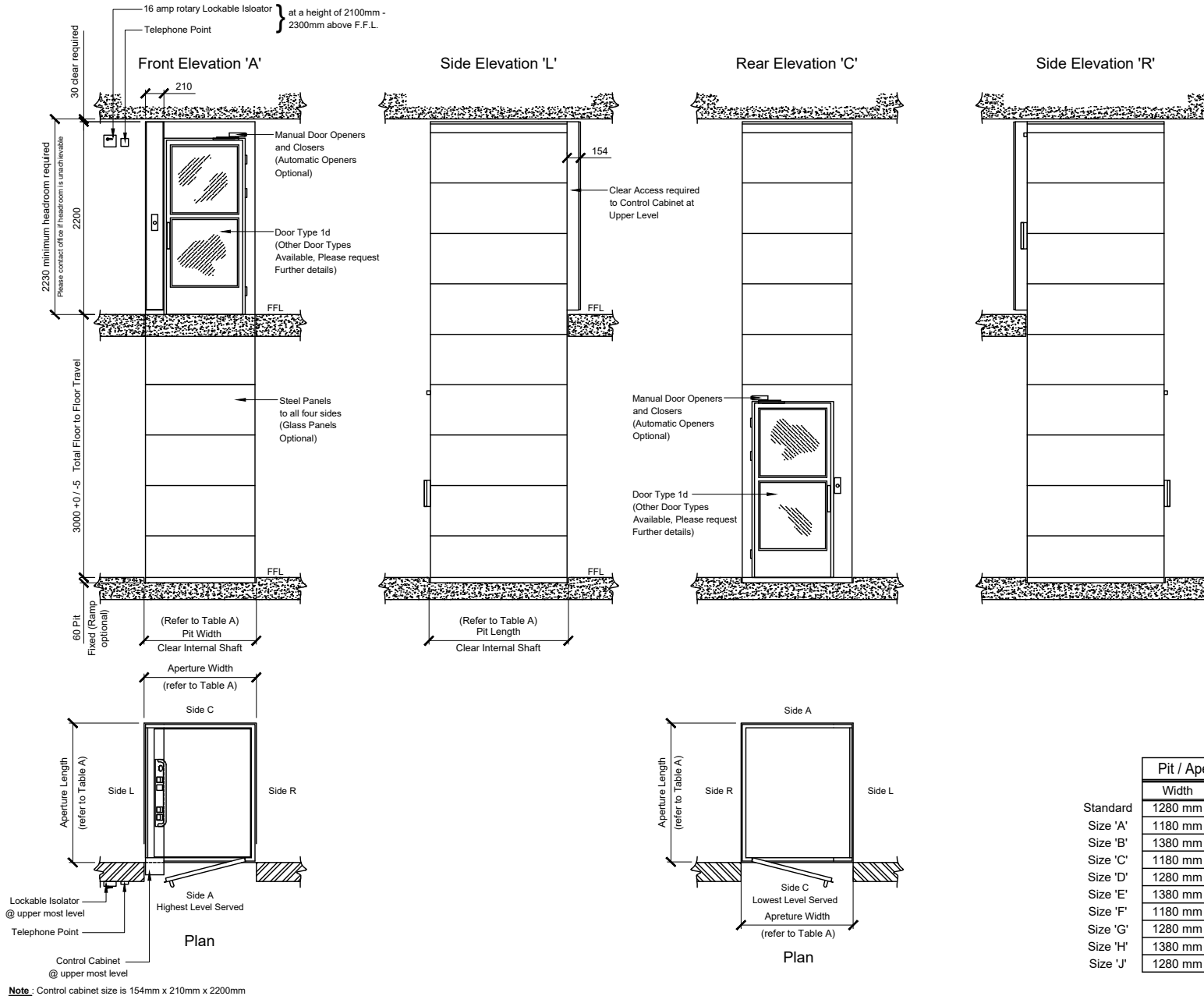


Table A

	Pit / Aperture Size		Platform Size		Landing Clear Opening	
	Width	Length	Width	Length	Width	Height
Standard	1280 mm	1590 mm	1120 mm	1480 mm	1280 mm	2230 mm
Size 'A'	1180 mm	1590 mm	1020 mm	1480 mm	1180 mm	2230 mm
Size 'B'	1380 mm	1590 mm	1220 mm	1480 mm	1380 mm	2230 mm
Size 'C'	1180 mm	980 mm	1020 mm	870 mm	1180 mm	2230 mm
Size 'D'	1280 mm	980 mm	1120 mm	870 mm	1280 mm	2230 mm
Size 'E'	1380 mm	980 mm	1220 mm	870 mm	1380 mm	2230 mm
Size 'F'	1180 mm	1790 mm	1020 mm	1680 mm	1180 mm	2230 mm
Size 'G'	1280 mm	1790 mm	1120 mm	1680 mm	1280 mm	2230 mm
Size 'H'	1380 mm	1790 mm	1220 mm	1680 mm	1380 mm	2230 mm
Size 'J'	1280 mm	1280 mm	1120 mm	1170 mm	1280 mm	2230 mm

IMPORTANT: this drawing must be used in conjunction with Drawing No. AL00 Builders Work & Electrical Requirements

DO NOT SCALE FROM THIS DRAWING. COPYRIGHT PROTECTED. ALL DIMENSIONS TO BE CHECKED ON SITE.

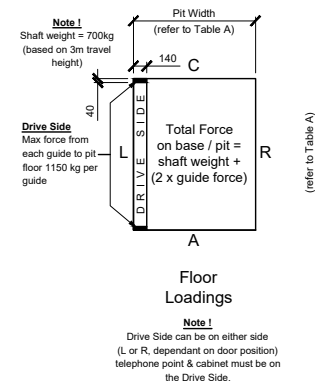
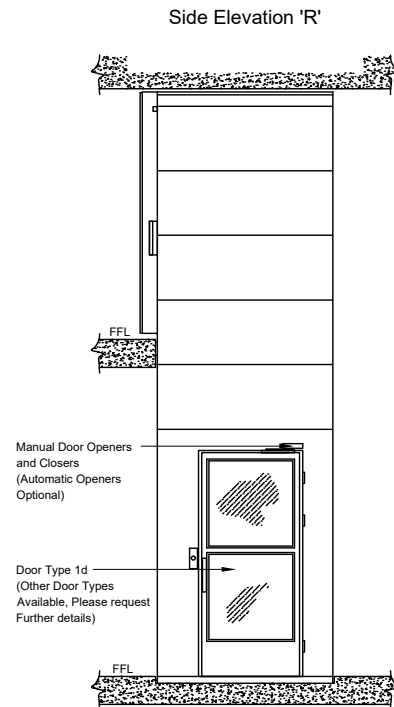
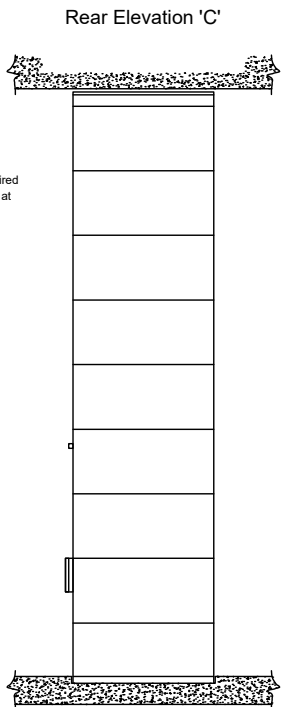
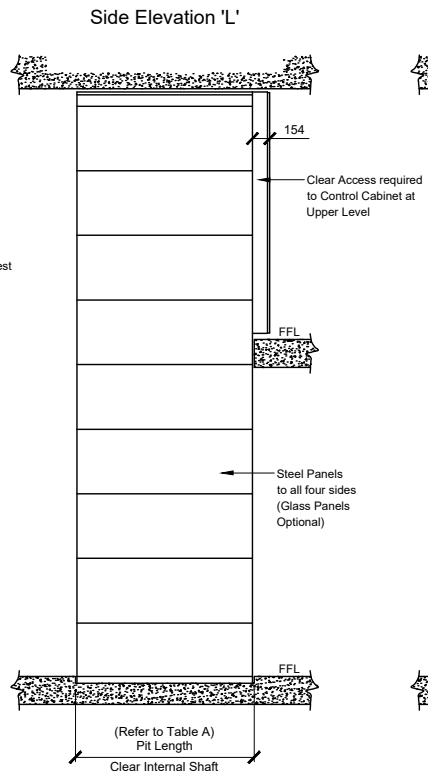
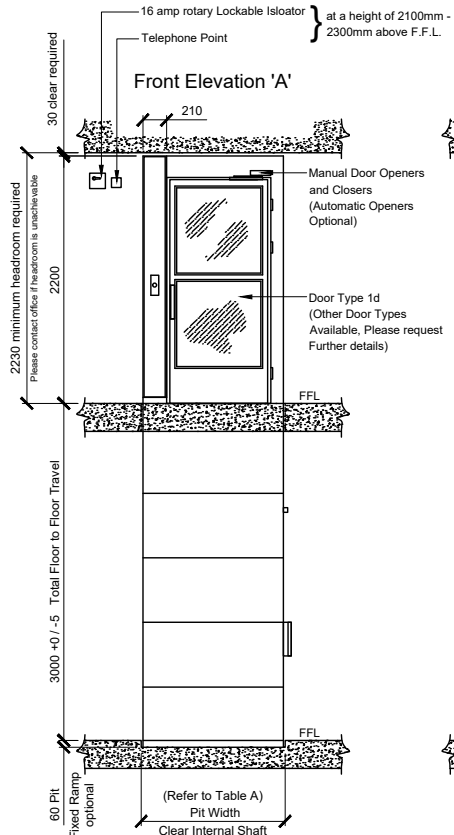
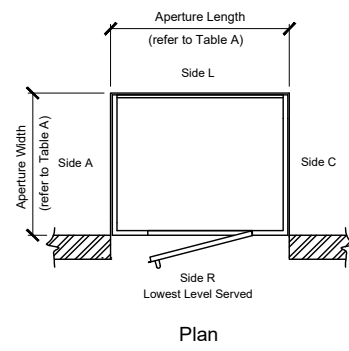
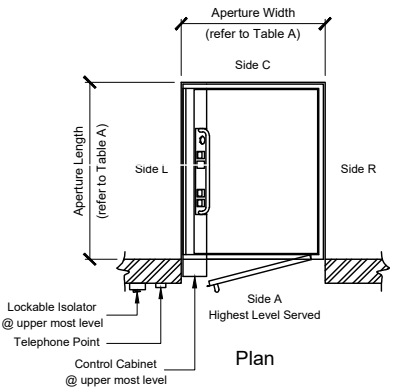


Table A

	Pit / Aperture Size		Platform Size		Landing Clear Opening	
	Width	Length	Width	Length	Width	Height
Standard	1280 mm	1590 mm	1120 mm	1480 mm	1280 mm	2230 mm
Size 'A'	1180 mm	1590 mm	1020 mm	1480 mm	1180 mm	2230 mm
Size 'B'	1380 mm	1590 mm	1220 mm	1480 mm	1380 mm	2230 mm
Size 'C'	1180 mm	980 mm	1020 mm	870 mm	1180 mm	2230 mm
Size 'D'	1280 mm	980 mm	1120 mm	870 mm	1280 mm	2230 mm
Size 'E'	1380 mm	980 mm	1220 mm	870 mm	1380 mm	2230 mm
Size 'F'	1180 mm	1790 mm	1020 mm	1680 mm	1180 mm	2230 mm
Size 'G'	1280 mm	1790 mm	1120 mm	1680 mm	1280 mm	2230 mm
Size 'H'	1380 mm	1790 mm	1220 mm	1680 mm	1380 mm	2230 mm
Size 'J'	1280 mm	1280 mm	1120 mm	1170 mm	1280 mm	2230 mm

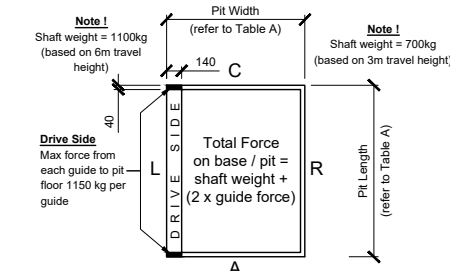
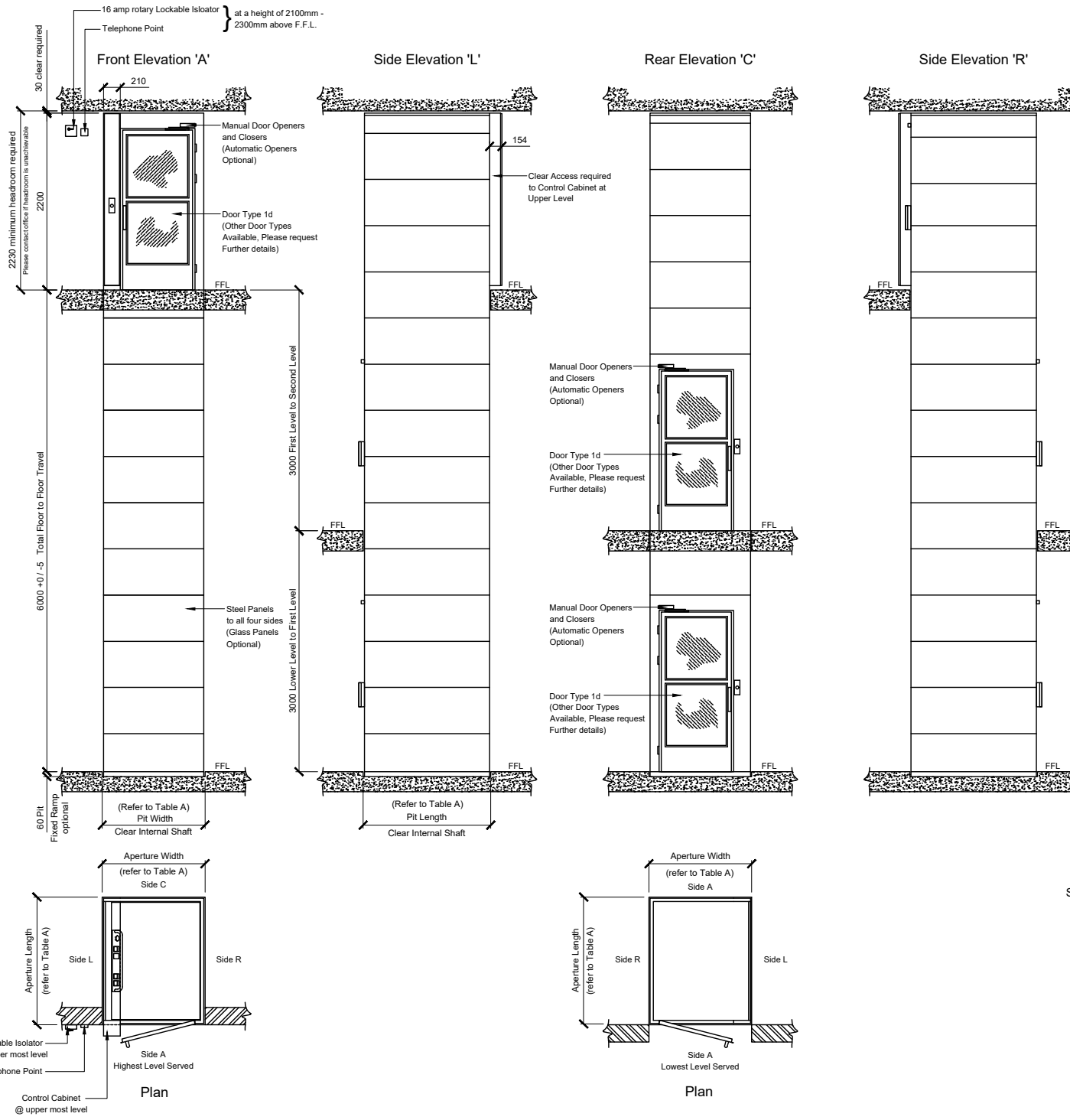


Note: Control cabinet size is 154mm W x 210mm L x 2200mm H

IMPORTANT: this drawing must be used in conjunction with Drawing No. AL00 Builders Work & Electrical Requirements

Ability LIFTS LTD <small>Kingsley Business Park, Oranger Road, Stafford, South Yorkshire, S11 3LG. Tel: 01929 494949 Email: sales@abilitylifts.co.uk</small>		Opt 100 Platform Lift
Site : TYPICAL ARRANGEMENT		
Project No. : OPT100/OA/L12/TH3000	Drawing No. : AL03	Revision No. :
Scale : NTS @ A2	Date : Feb 2016	Dwn : NB
Page : 1 of 2		
Refer to Drawing No. AL00 Generic Builders Work & Electrical Requirements - Page 2 of 2		

DO NOT SCALE FROM THIS DRAWING. COPYRIGHT PROTECTED.
ALL DIMENSIONS TO BE CHECKED ON SITE.



Floor Loadings

Note 1
Drive Side can be on either side (L or R) telephone point & cabinet must be on the Drive Side.

Table A

Standard	Pit / Aperture Size		Platform Size		Landing Clear Opening	
	Width	Length	Width	Length	Width	Height
Size 'A'	1180 mm	1590 mm	1020 mm	1480 mm	1180 mm	2230 mm
Size 'B'	1380 mm	1590 mm	1220 mm	1480 mm	1380 mm	2230 mm
Size 'C'	1180 mm	980 mm	1020 mm	870 mm	1180 mm	2230 mm
Size 'D'	1280 mm	980 mm	1120 mm	870 mm	1280 mm	2230 mm
Size 'E'	1380 mm	980 mm	1220 mm	870 mm	1380 mm	2230 mm
Size 'F'	1180 mm	1790 mm	1020 mm	1680 mm	1180 mm	2230 mm
Size 'G'	1280 mm	1790 mm	1120 mm	1680 mm	1280 mm	2230 mm
Size 'H'	1380 mm	1790 mm	1220 mm	1680 mm	1380 mm	2230 mm
Size 'J'	1280 mm	1280 mm	1120 mm	1170 mm	1280 mm	2230 mm

Ability LIFTS LTD
Whisper Business Park, Highways House, South Weston, S11 9LD.
TEL: 01454 602 880
Email: sales@abilitylifts.co.uk

Opt 100 Platform Lift

Site: TYPICAL ARRANGEMENT

Project No.: OPT100/OT/L3/TH6000 Drawing No.: AL05 Revision No.:
Scale: NTS @ A2 Date: Mar 2016 Dm: NB Page: 1 of 2

Refer to Drawing No. AL06 Generic Builders Work & Electrical Requirements - Page 2 of 2

IMPORTANT: this drawing must be used in conjunction with Drawing No. AL00 Builders Work & Electrical Requirements

Note: Control cabinet size is 154mm W x 210mm L x 2200mm H

DO NOT SCALE FROM THIS DRAWING. COPYRIGHT PROTECTED. ALL DIMENSIONS TO BE CHECKED ON SITE.

16 amp rotary Lockable Isolator } at a height of 2100mm - 2300mm above F.F.L. adjacent to the electrical cabinet
Telephone Point

Front Elevation 'A'

Side Elevation 'L'

Rear Elevation 'C'

Side Elevation 'R'

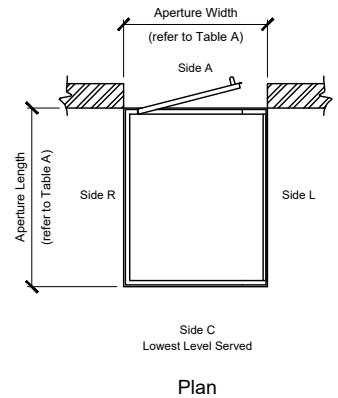
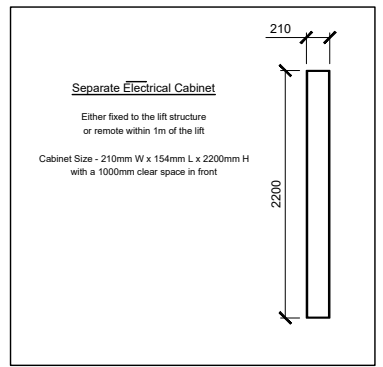
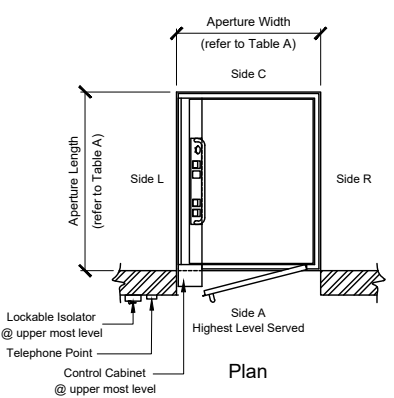
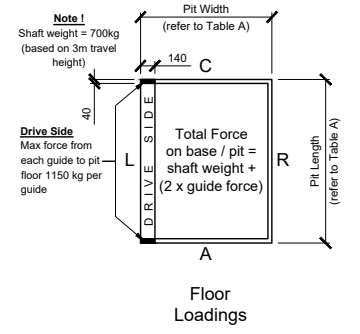
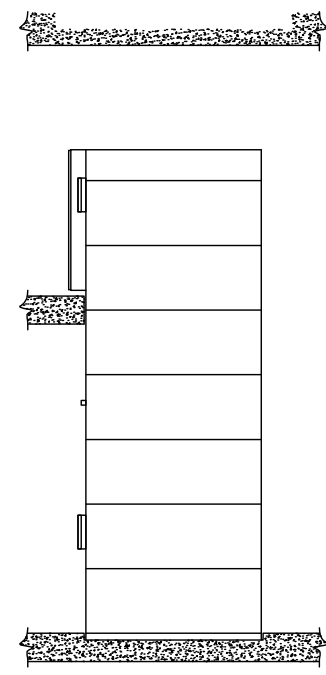
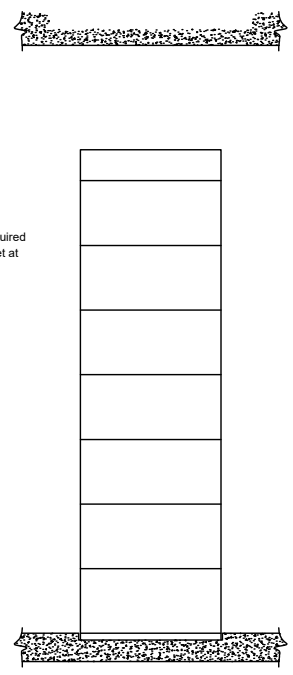
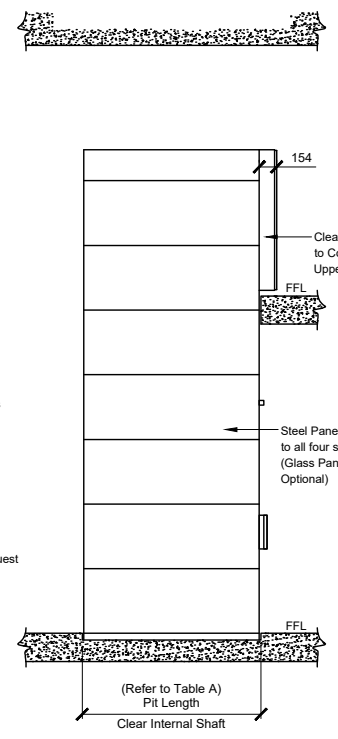
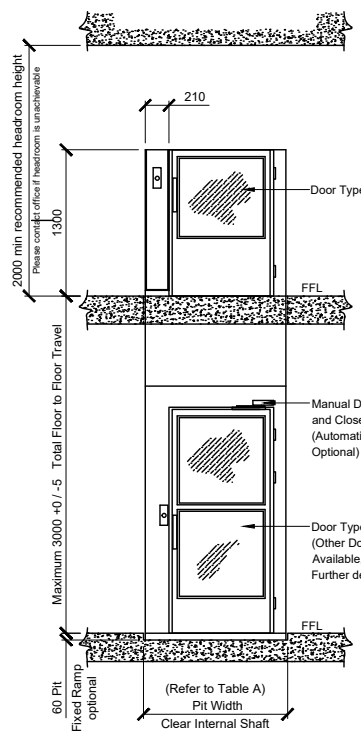


Table A

	Pit / Aperture Size		Platform Size		Landing Clear Opening	
	Width	Length	Width	Length	Width	Height
Standard	1280 mm	1590 mm	1120 mm	1480 mm	1280 mm	2230 mm
Size 'A'	1180 mm	1590 mm	1020 mm	1480 mm	1180 mm	2230 mm
Size 'B'	1380 mm	1590 mm	1220 mm	1480 mm	1380 mm	2230 mm
Size 'C'	1180 mm	980 mm	1020 mm	870 mm	1180 mm	2230 mm
Size 'D'	1280 mm	980 mm	1120 mm	870 mm	1280 mm	2230 mm
Size 'E'	1380 mm	980 mm	1220 mm	870 mm	1380 mm	2230 mm
Size 'F'	1180 mm	1790 mm	1020 mm	1680 mm	1180 mm	2230 mm
Size 'G'	1280 mm	1790 mm	1120 mm	1680 mm	1280 mm	2230 mm
Size 'H'	1380 mm	1790 mm	1220 mm	1680 mm	1380 mm	2230 mm
Size 'J'	1280 mm	1280 mm	1120 mm	1170 mm	1280 mm	2230 mm

Note: Control Cabinet with a half height gate of 210mm W x 154mm L x 1300mm H; a separate electrical cabinet is required.

IMPORTANT: this drawing must be used in conjunction with Drawing No. AL00 Builders Work & Electrical Requirements

Ability LIFTS LTD Riverside Business Park, Popple Hill, Sheffield, South Yorkshire, S13 3EG Tel: 0114 266 8888 Email: sales@abilitylifts.co.uk		Opt 100 Platform Lift
Site : TYPICAL ARRANGEMENT		
Project No. : OPT100/OFO/L2/TH3000	Drawing No. : IN 06	Revision No. :
Scale : NTS @ A2	Date : Feb 2016	Dim : NB Page : 1 of 2
Refer to Drawing No. AL00 Generic Builders Work & Electrical Requirements - Page 2 of 2		

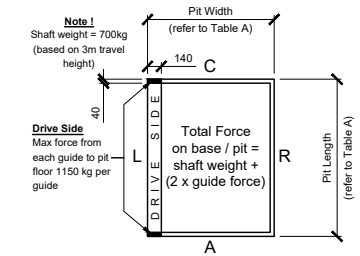
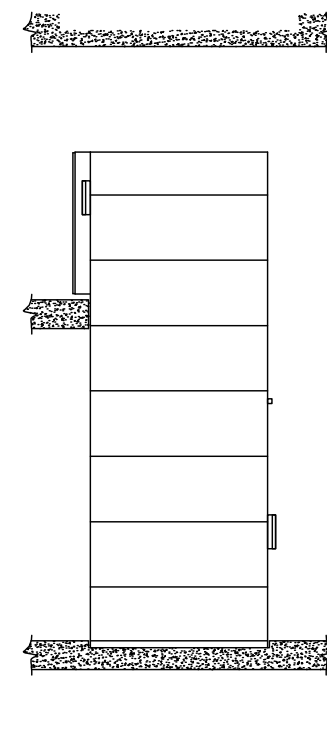
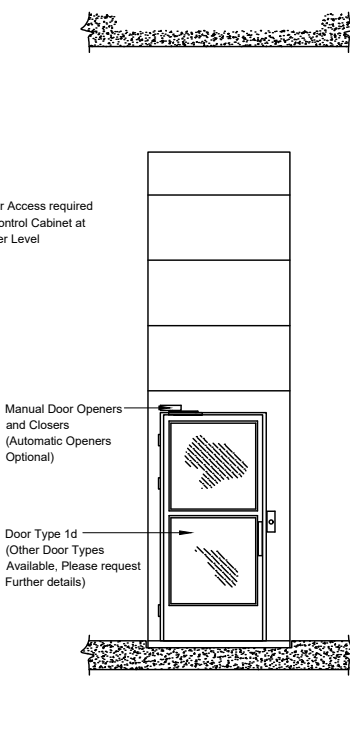
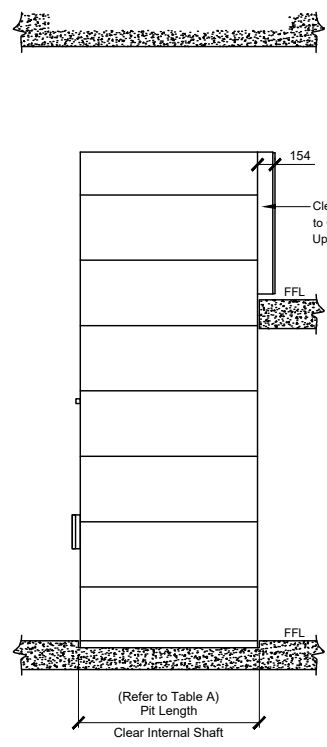
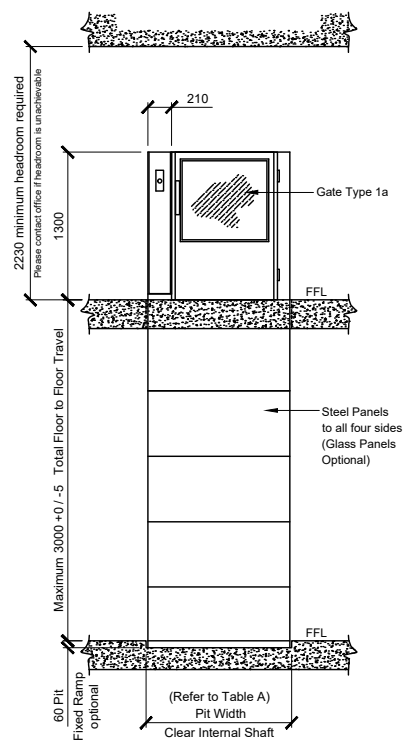
16 amp rotary Lockable Isolator } at a height of 2100mm -
Telephone Point } 2300mm above F.F.L.

Front Elevation 'A'

Side Elevation 'L'

Rear Elevation 'C'

Side Elevation 'R'



Floor Loadings

Note!
Drive Side can be on either side (L or R) telephone point & cabinet must be on the Drive Side.

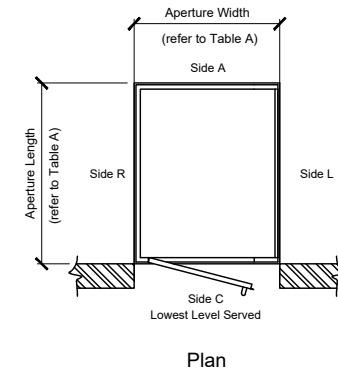
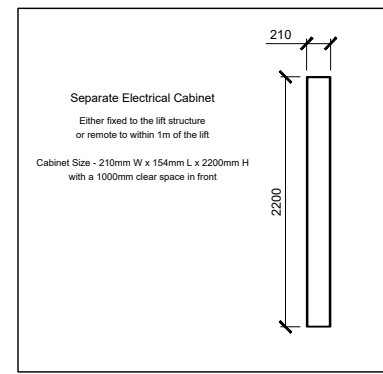
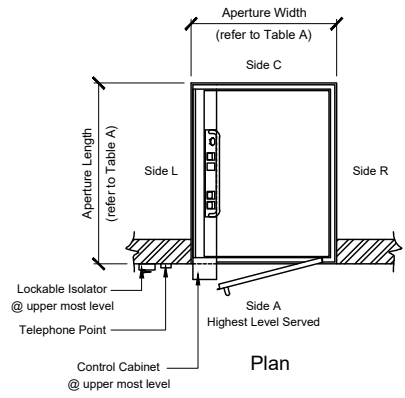


Table A

	Pit / Aperture Size		Platform Size		Landing Clear Opening	
	Width	Length	Width	Length	Width	Height
Standard	1280 mm	1590 mm	1120 mm	1480 mm	1280 mm	2230 mm
Size 'A'	1180 mm	1590 mm	1020 mm	1480 mm	1180 mm	2230 mm
Size 'B'	1380 mm	1590 mm	1220 mm	1480 mm	1380 mm	2230 mm
Size 'C'	1180 mm	980 mm	1020 mm	870 mm	1180 mm	2230 mm
Size 'D'	1280 mm	980 mm	1120 mm	870 mm	1280 mm	2230 mm
Size 'E'	1380 mm	980 mm	1220 mm	870 mm	1380 mm	2230 mm
Size 'F'	1180 mm	1790 mm	1020 mm	1680 mm	1180 mm	2230 mm
Size 'G'	1280 mm	1790 mm	1120 mm	1680 mm	1280 mm	2230 mm
Size 'H'	1380 mm	1790 mm	1220 mm	1680 mm	1380 mm	2230 mm
Size 'J'	1280 mm	1280 mm	1120 mm	1170 mm	1280 mm	2230 mm

Note: Control Cabinet with a half height gate is 210mm W x 154mm L x 1300mm H, a separate electrical cabinet is required

IMPORTANT: this drawing must be used in conjunction with Drawing No. AL00 Builders Work & Electrical Requirements

Ability LIFTS LTD Kingsley Business Park, Orpington Road, South East, South Yorkshire, S19 9AG. Tel: 01474 208400 Email: sales@abilitylifts.co.uk		Opt 100 Platform Lift
Site : TYPICAL ARRANGEMENT		
Project No. : OPT1100/OT/L2/TH 3000	Drawing No. : AL07	Revision No. :
Scale : NTS @ A2	Date : Mar 2016	Dm : NB
Page : 1 of 2		
Refer to Drawing No. AL00 Generic Builders Work & Electrical Requirements - Page 2 of 2		

BUILDERS WORK AND GENERAL NOTE

The customer is responsible for carrying out the work below. These are required for the lift to comply with the supply of Machinery (safety) Regulations 1992. If any points are unclear then please contact Ability Lifts Limited for clarification.

1.0 GENERAL

- 1.1 - Provide clear and safe access into and through the building for the passage of the lift equipment and personnel must be maintained. The equipment delivered to site; based on a typical 2 stop, 3m travel, type Opt 100 Platform Lift: -
Packing crate: 2.5m long x 1.5m wide x 1.8m high. Total weight = 1500kg approx. Any lift above 3m travel please allow a further 100kg approx per 1m travel (or part thereof).
- 1.2 - Unload delivered materials and store in a suitable dry and secure location, within 5m of the proposed lift location. Parts should be handled with care to avoid damaging components and decorative finishes.
Please Note: parts may become damaged if stored outside or in damp conditions.
- 1.3 - Provide a 60mm shallow recess pit depth to suit the respective well dimensions shown in Table A.
Please Note: Though a pit is recommended for level access, sometimes it may not possible to construct a pit then the lift can be fitted directly on to a structural base with ramp access.
- 1.4 - Provide a vertical plumb aperture through the building to suit the respective well dimensions shown in Table A
- 1.5 - Provide clear openings on each landing entrance to suit the respective dimension shown in Table A.
Please Note: all making good works must not be undertaken until the installation of the lift is complete.
- 1.6 - Provide a minimum headroom height at the top level served by the lift of 2230mm.
Please Note: Pit, Vertical Aperture, Landing openings and headroom height must be all correctly aligned for installation purposes.
- 1.7 - Provision of a telephone (standard) or emergency auto-dialler (optional) or intercom (optional) is required on the platform the customer must provide a dedicated line terminated adjacent to the lift rotary isolator.
Please Note: only one communication device can be fitted on the platform.
- 1.8 - Control cabinet will need to be accessed during routine maintenance and therefore should not be obstructed by walls and/or nibs.
- 1.9 - Installation area and access route shall be clear of debris and site personnel for the duration of the lift installation. A secured area shall be made available, adjacent to installation for storage of tools and equipment.
- 1.10 - A safe working area 1000mm back from the leading edge by the full width of the platform lift shaft is required at each level for the duration of the installation.
- 1.11 - Builder to provide hoardings or barriers to protect all upper landing for the duration of the lift installation.
- 1.12 - Installation area must be adequately illuminated.

2.0 DIMENSIONS AND TOLERANCES

Do not scale from the drawings. All dimensions are in millimeters except where otherwise stated. All dimensions are to be measured from datum lines A-A (front of pit) and B-B (side of pit). The clear plumb dimensions shown have a tolerance of +5mm/-0mm.

3.0 BUILDING SERVICES

On no account should steam, gas, water or any other building service be installed in or run through the clear lift envelope.

4.0 LIFT ENVELOPE

- 4.1 - The structural pit floor must be firm, level, waterproof and designed and constructed to withstand all the forces imposed by the lift and its equipment. **NOTE:** no insulation is to be fitted beneath the pit floor that will impact on its capability to withstand the imposed forces applied by the lift.
- 4.2 - Make good the surrounds of entrances after doors/frames and shaft are finally positioned and fixed following installation.

5.0 ELECTRICAL WORKS

- 5.1 - Provide a dedicated RCD, 240 volt, 1 phase, 50 hertz, 16 amps, 3 wire permanent supply terminating in a lockable rotary isolator.
- 5.2 - The lockable rotary isolator should be positioned 2100m - 2300m above floor level adjacent to the lift control cabinet (normally located on Side A at the upper floor level served by the lift on the machinery/drive side). The isolator should be able to be padlocked in the OFF position and be positioned so it is easily and readily accessible.
- 5.3 - The cables to the rotary isolator are to be suitable for supplying a 0.55kw motor taking 6.7A at full load and 13A momentary starting current. The voltage drop to the isolating switch must not exceed 2% when carrying the starting current.
- 5.4 - The electrical work must comply with the latest revision of BS 7671 : IEE Wiring Regulations.
- 5.5 - Please provide a separate dedicated telephone line terminating near the lift isolator. **NOTE:** This is not required if an intercom is selected.

Ability LIFTS LTD <small>Waters Business Park, Coppenhall Road, South Norwiche, S11 9LQ. Tel: 01454 546 883 Email: info@abilitylifts.co.uk</small>		Opt 100 Platform Lift
Site : TYPICAL ARRANGEMENT		
Project : OPT100 Generic Builders Work + Electrical Requirements Drawing No. AL00		
Scale : NTS @ A2 Date : Mar 2016 Dm : NB Page : 2 of 2		